

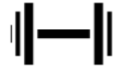
# Lotus Management Ltd.



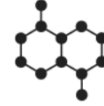
comfort / dries quickly



easy to clean



resistance to weather



lightweight

We thank you for your decision to choose Mountain House Furniture. Your sling furniture will be a feature that you can enjoy for many years to come with minimal maintenance required.

The lightness, transparency and wide range of colors of the Batyline range, produced using Smart Yarn technology, have been attracting furniture designers and manufacturers for more than 30 years. Its unrivalled resistance, easy cleaning and attractive appearance make Batyline a favorite choice for sling seat applications.

With Batyline, Serge Ferrari enables the design of lightweight furniture offering users the best guarantees in terms of durability (lasting resistance to UV) and comfort. Batyline has all the properties necessary to create a pleasant outdoor experience: the fabric stays cool in summer, dries quickly and provides good resistance to mold. Performance and properties suitable for contract furniture. Batyline is also ideal for the design of office and workspace furniture. It meets the requirements of all main fire safety standards, enabling the creation of furniture with clean lines that is maintenance free.

## Batyline® Sling

Batyline® is an extremely durable and high quality material consisting of a polyester fiber covered by a coating of PVC, making it nearly impossible to tear.

### It is resistant to:

Rot & mildew

UV radiation

Fading (although like all materials left outdoors, slight discolouration is unavoidable over time.)

### Maintenance

Wash the mesh with a liquid dish detergent and water. Use a soft bristle brush, rinse and dry with a cloth to avoid water stains settling on the stainless steel frames.

### Note:

Direct contact against heat lamps, lights, or other heat sources should be avoided. Avoid sharp objects from coming in contact with the material, as it can be cut.